

*“My doctor ordered the Cunningham Panel™ for my son and the results gave him a clearer picture that he has an autoimmune disorder. After receiving treatment, we are finally seeing the son we remember.”*



molecularera labs

Providing specialized clinical testing for individuals suspected of suffering from treatable autoimmune neuropsychiatric conditions such as autoimmune encephalopathies and basal ganglia encephalitis (AE-BGE).

755 Research Parkway, Suite 410  
Oklahoma City, Oklahoma 73104

PHONE: 405.239.5250 FAX: 405.239.5255  
customerservice@molecularera.com

**MOLECULERALABS.COM**

*Is a precision medicine company working to identify the root cause of multiple neurologic, psychiatric, and behavioral disorders.*

## **COULD AN INFECTION CAUSE NEUROPSYCHIATRIC SYMPTOMS?**

**ANOREXIA**

**OCD**

**TICS**

**ANXIETY**

**OBSESSIONS**

**HYPERACTIVITY**

**DEPRESSION**

**BEHAVIORAL  
REGRESSION**

**DIFFICULTY  
CONCENTRATING**

**IRRITABILITY**

**AGGRESSION/RAGE**

**CHANGES IN  
HANDWRITING**

**BEDWETTING**

**SLEEP  
DISTURBANCES**

**SENSORY  
ABNORMALITIES**



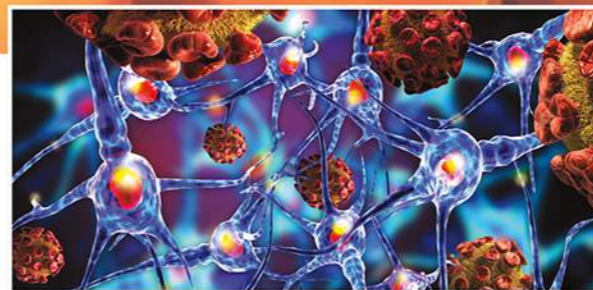
# Patients may be suffering from a treatable autoimmune disorder.

In some children and adults, common infections, such as strep, influenza and mycoplasma pneumonia, can trigger an autoimmune response which causes an onset of neurologic and/or psychiatric symptoms.



## WHAT TO LOOK FOR

- ◆ Onset of psychiatric/neurologic symptoms including OCD, tics, separation anxiety/fears, aggression, and behaviors associated with autism spectrum disorder (ASD).
- ◆ Diagnosis of OCD, ADHD, Tourette's, autism, anorexia or other psychiatric illness not responding to treatment.
- ◆ Current/prior infection or illness (e.g., strep, herpes, mono, sinusitis, Lyme disease and others).
- ◆ Family history of autoimmune disorder (e.g., psoriasis, arthritis, IBD, lupus, Type 1 diabetes, allergies).



## WHAT TAKES PLACE?

The immune system produces antibodies intended to fight an infection but instead attack healthy tissue in a portion of the patient's brain responsible for movement and behaviors. This misdirected autoimmune reaction triggers neurologic and/or psychiatric symptoms. Inflammation in the brain and elevated levels of circulating autoantibodies directed against certain receptors in the brain trigger the symptoms. Treatment with psychotropic drugs may fail to resolve symptoms.

## COMMON INFECTIONS CAN TRIGGER NEUROLOGIC AND PSYCHIATRIC SYMPTOMS.

## THERE IS HOPE TO SHINE AGAIN

### DIAGNOSIS & TREATMENT

The Cunningham Panel™ can assist physicians in determining the likelihood that a patient's neuropsychiatric symptoms are due (entirely or in part) to an infection-induced autoimmune response. The distinction is critical, since treatment of the autoimmune response involves eradicating the underlying infection(s) and correcting the immune dysfunction. Patients may be misdiagnosed with a psychiatric disorder and only treated symptomatically with psychotropic drugs. This, however, does not address the underlying cause behind the symptoms.

## The Cunningham Panel™

*An Autoimmune Encephalopathy and Basal Ganglia Encephalitis Panel (AE-BGE)*

The Cunningham Panel™ can help determine whether a patient's neurologic and/or psychiatric symptoms are due to an infection-induced autoimmune response or a primary psychiatric illness. The test measures the level of circulating autoantibodies in the blood which are associated with neuropsychiatric symptoms. Elevated levels indicate that symptoms may be due to an autoimmune response caused by an infection(s).

### HOW TO ORDER

Physicians can order the Cunningham Panel™ and retrieve results through a secure portal on our website. A specimen collection kit is provided and the serum sample is sent overnight to Moleculera Labs for processing. International ordering is available.

“ My son was diagnosed with Tourette's. The Cunningham Panel helped his doctor determine that an autoimmune disorder was causing the tics. He was treated and the tics are now gone. ”

Physicians may order online at: [www.moleculeralabs.com](http://www.moleculeralabs.com)